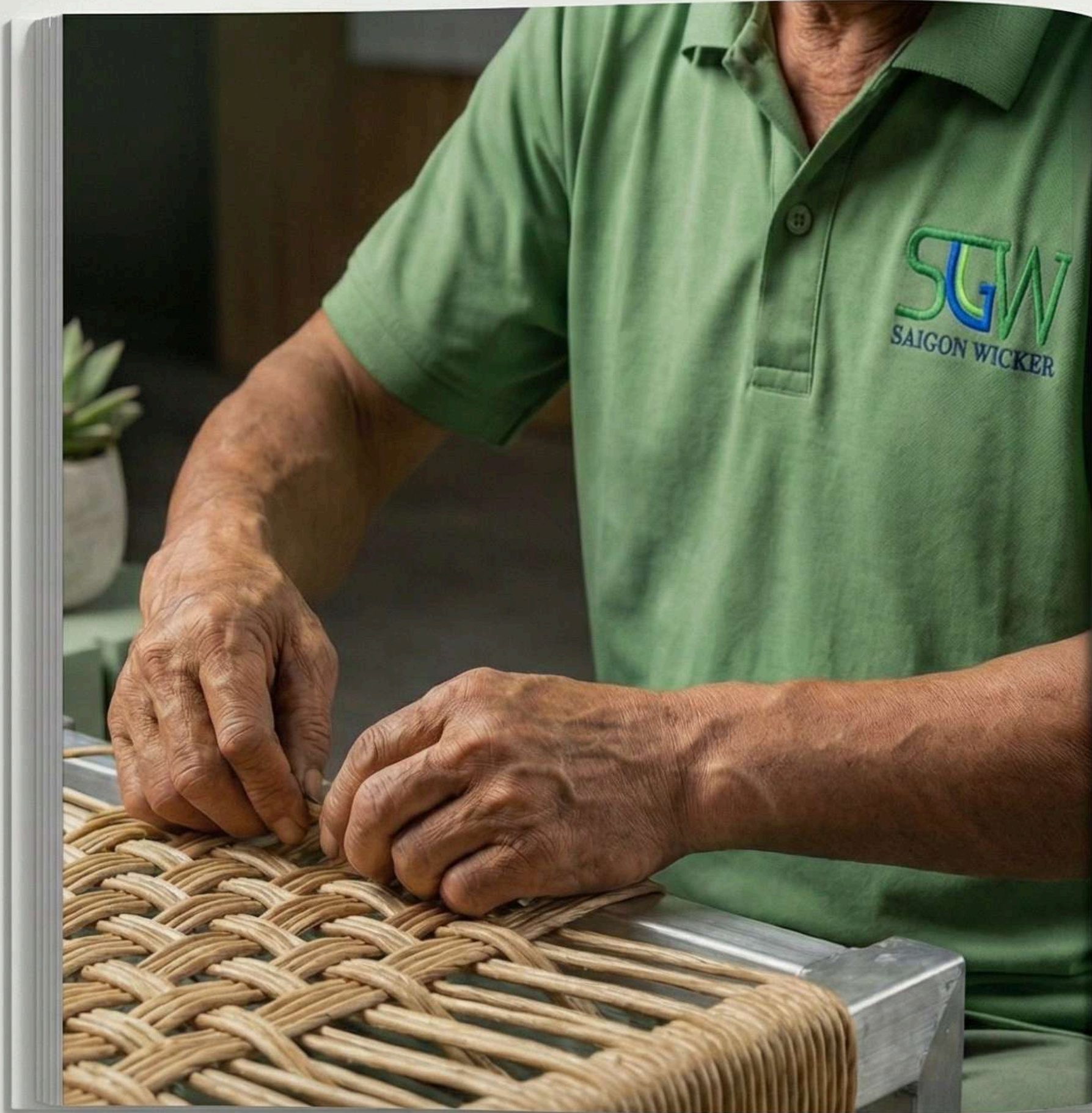




COMPANY PROFILE 2026





Our Values

Committed to sustainable materials,
artisan craftsmanship, and timeless design.

We create serene outdoor spaces that
blend seamlessly with nature.





QUALITY YOU CAN TRUST

We meet international standards through certifications including **BSCI**, **FSC**, **SMETA**, **OEKO-TEX**, ensuring responsible sourcing and ethical production practices.

Our manufacturing combines modern efficiency with skilled craftsmanship, giving us the flexibility to handle both large-scale orders and custom projects.

As your manufacturing partner, we focus on **three essentials**: consistent quality across orders, responsive communication throughout the process, and reliable delivery timelines.

Our partnership is built on transparency and accountability.



Our Milestones



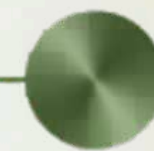
2006

**Ngoc Phuc
Established**



2020

**SGW
Established**



2024

**Long An Factory
17,000m²**



2026

**Expanding
Factory 30,000m²**



Revenue

Growth Trajectory



Consistent growth trajectory over the six-year period.

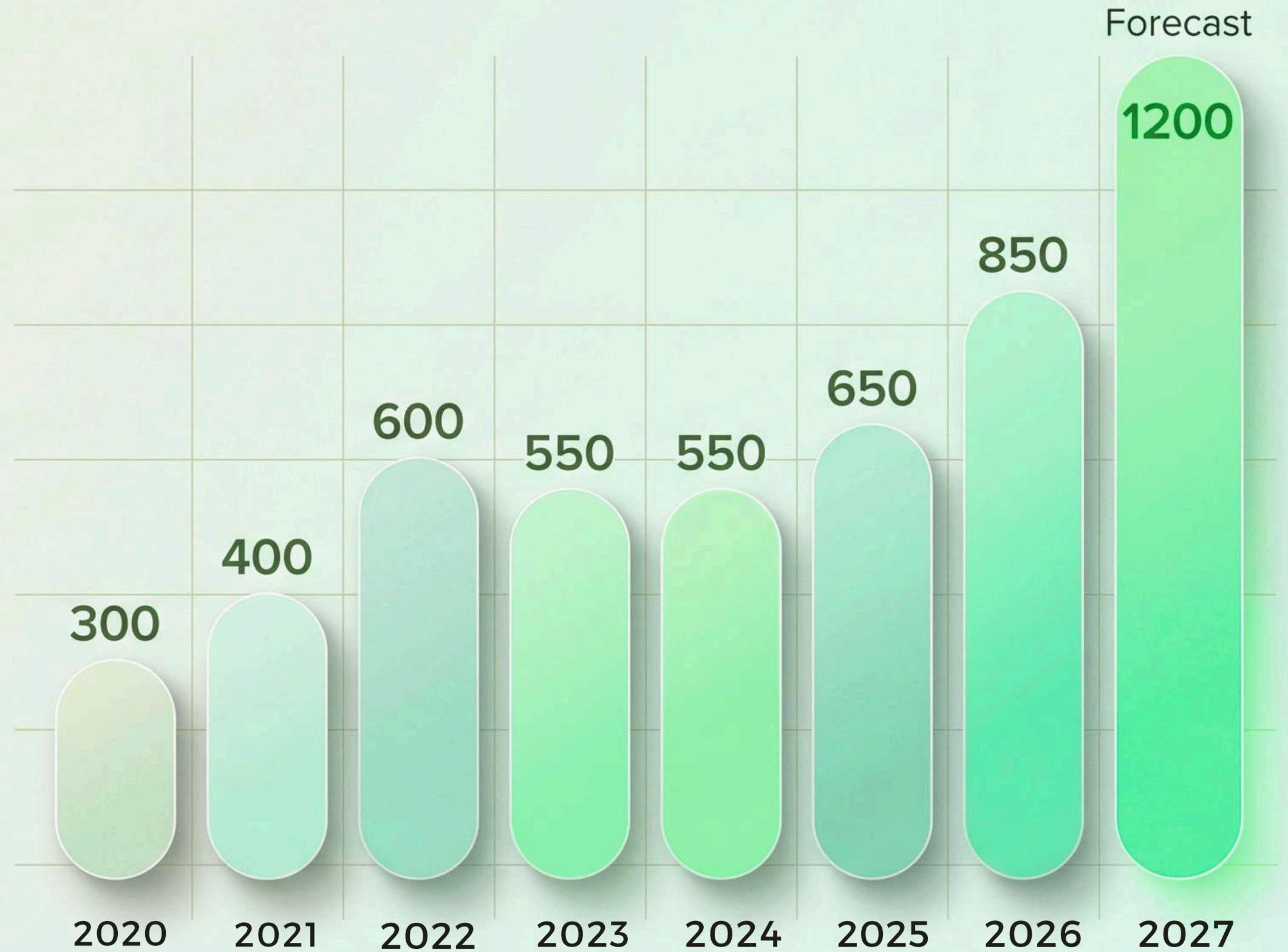
Projected revenue doubles from 2021 to 2025, reflecting strong market demand.



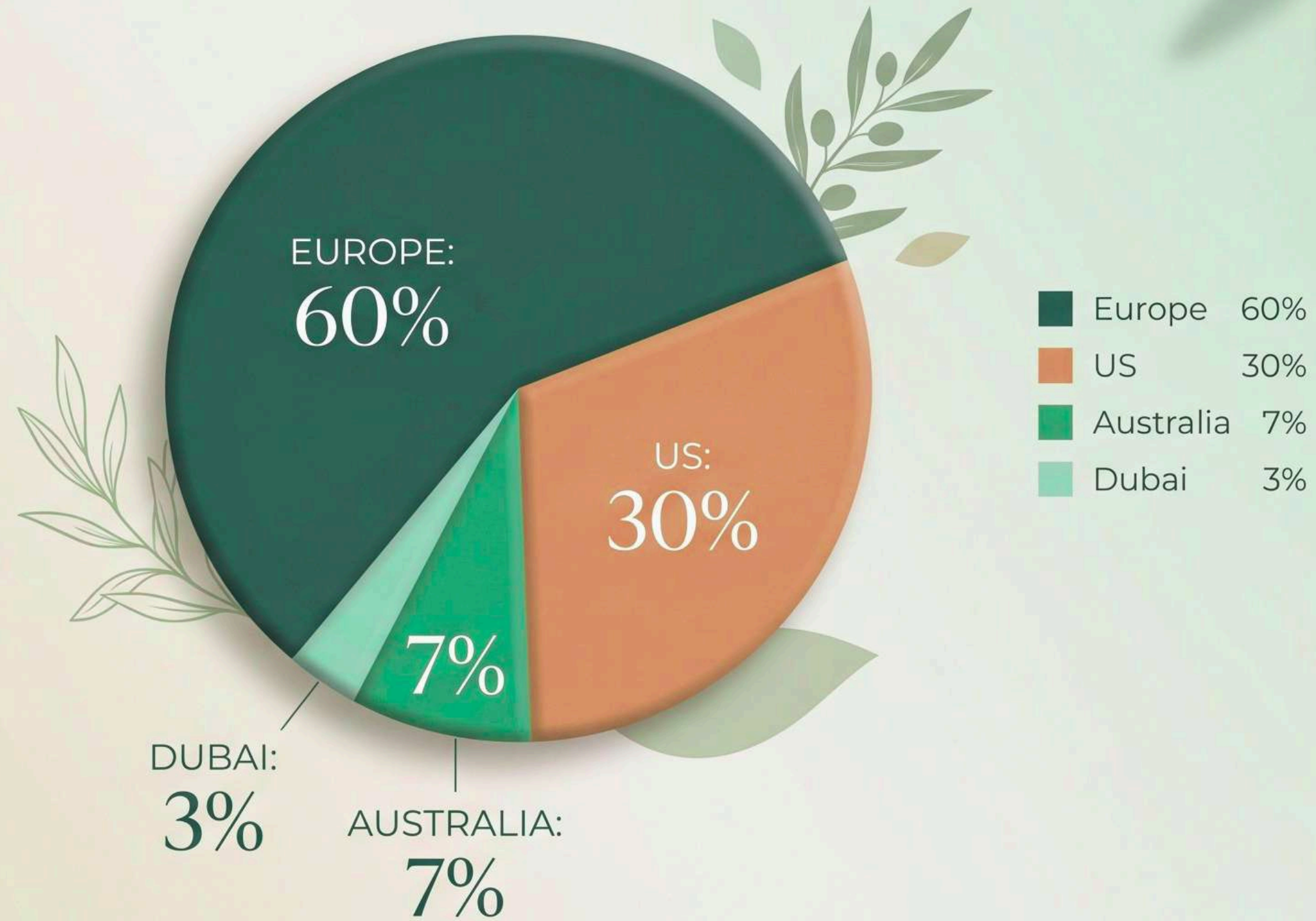


Capacity

Year	Furniture	Annual growth rate
2020	300	
2021	400	33.3%
2022	600	50.0%
2023	550	-8.3%
2024	550	0.0%
2025	650	18.2%
2026	850	30.8%
2027	1200	41.2%



MARKET SHARE



Raw Materials



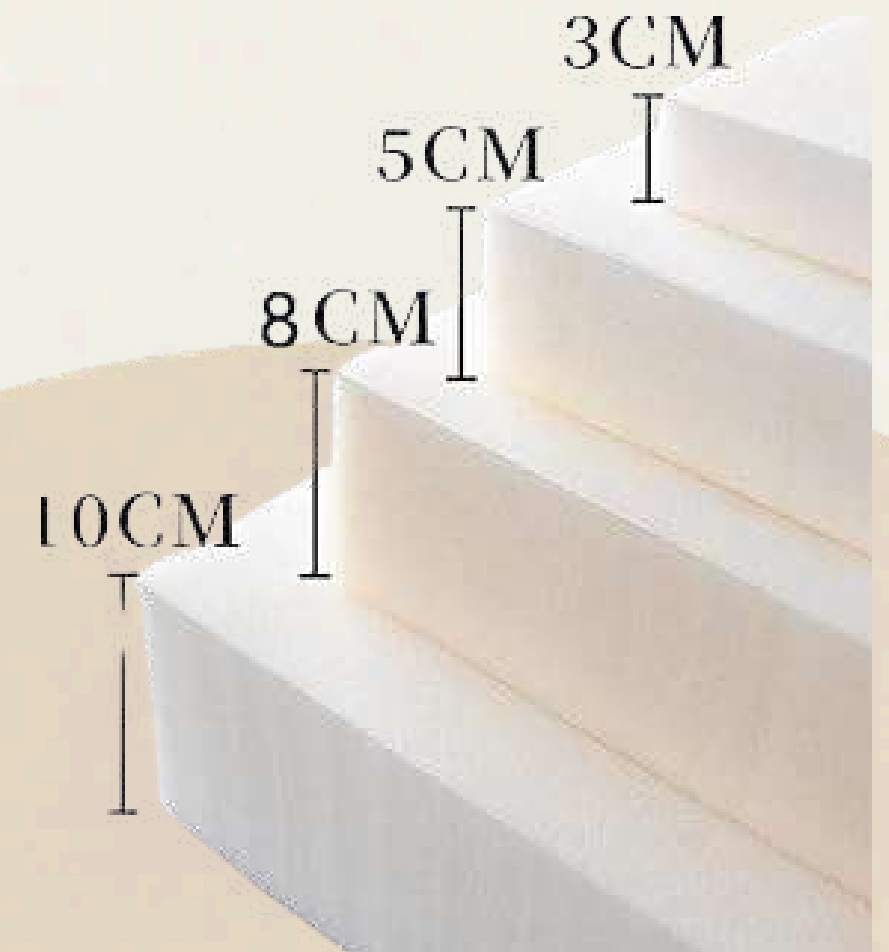
PP Rattan



Rope Weaving



Outdoor Fabric



Outdoor Foam

Raw Materials



Powder
coated
Aluminium &
Steel



Printed
Tempered
Glass



Aluminium
Heat Transfer



Solid Wood
Acacia
Teak
Eucalyptus

Our Valued Customers





OUR FACTORY

Factory Address:

Tan Long Commune, Thu Thua District, Long An Province, Vietnam.



TOTAL AREA: 50,000 M2

1. **Active Production Area:** 15,000 m²
(2023-2024)
 - **Office, Showroom:** 2,000 m²
 - Capacity:** 100 - 120 conts/month



2. **Expanding Area:** 30,000 m²
(2025-2026)

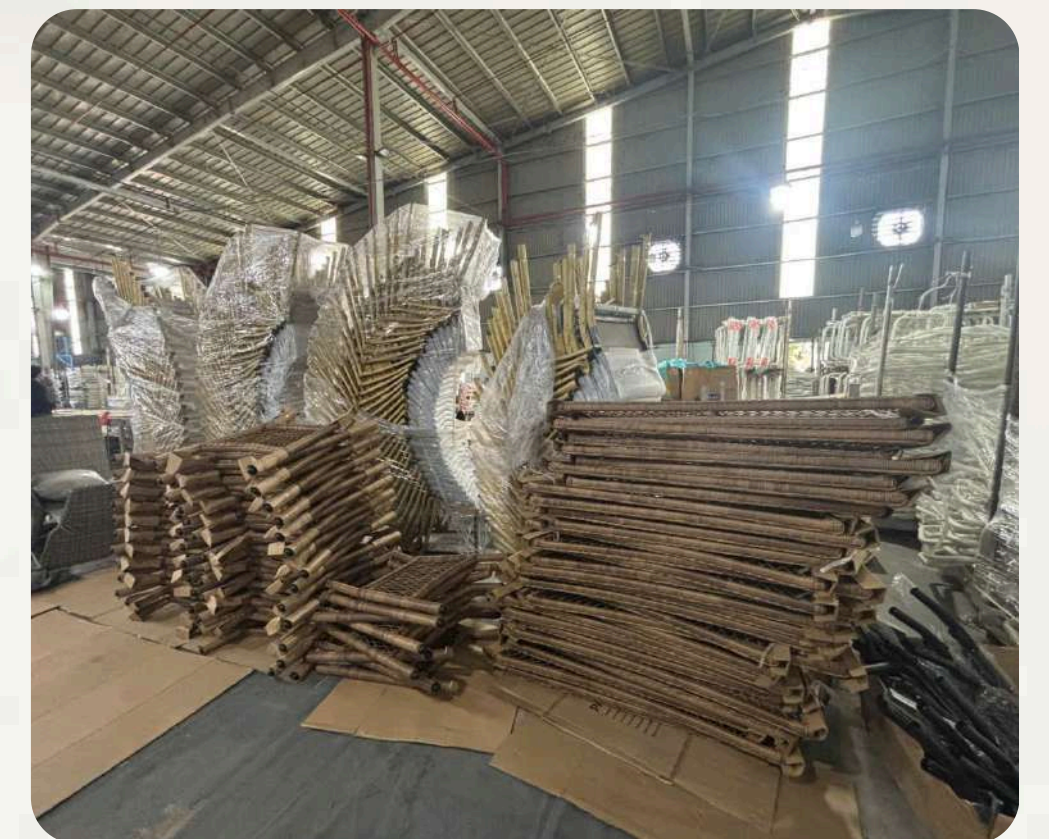
Capacity: 150 - 200 conts/month





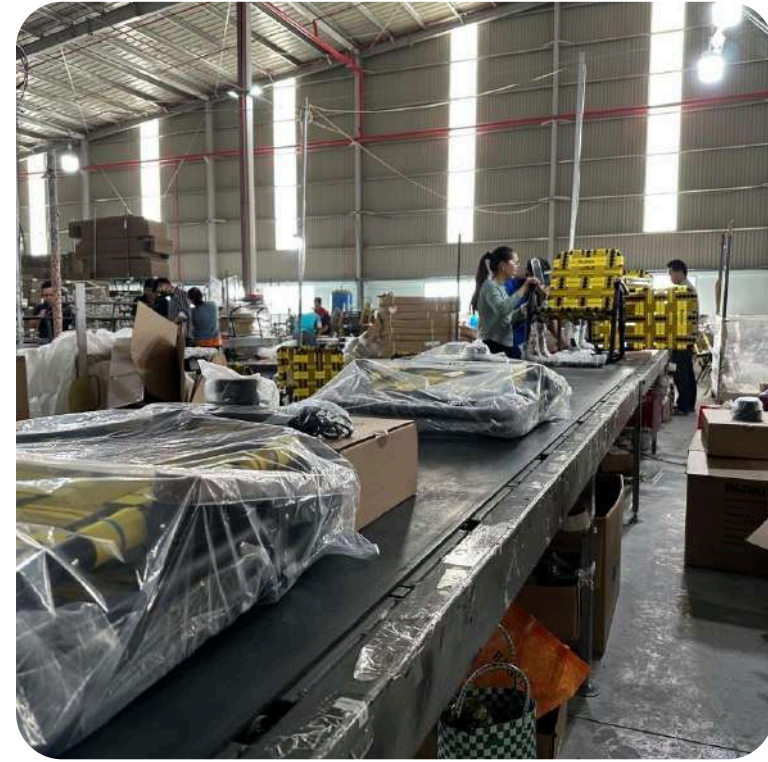


MATERIAL PREPARATION LINE



SGW | PACKING LINE

SAIGON WICKER





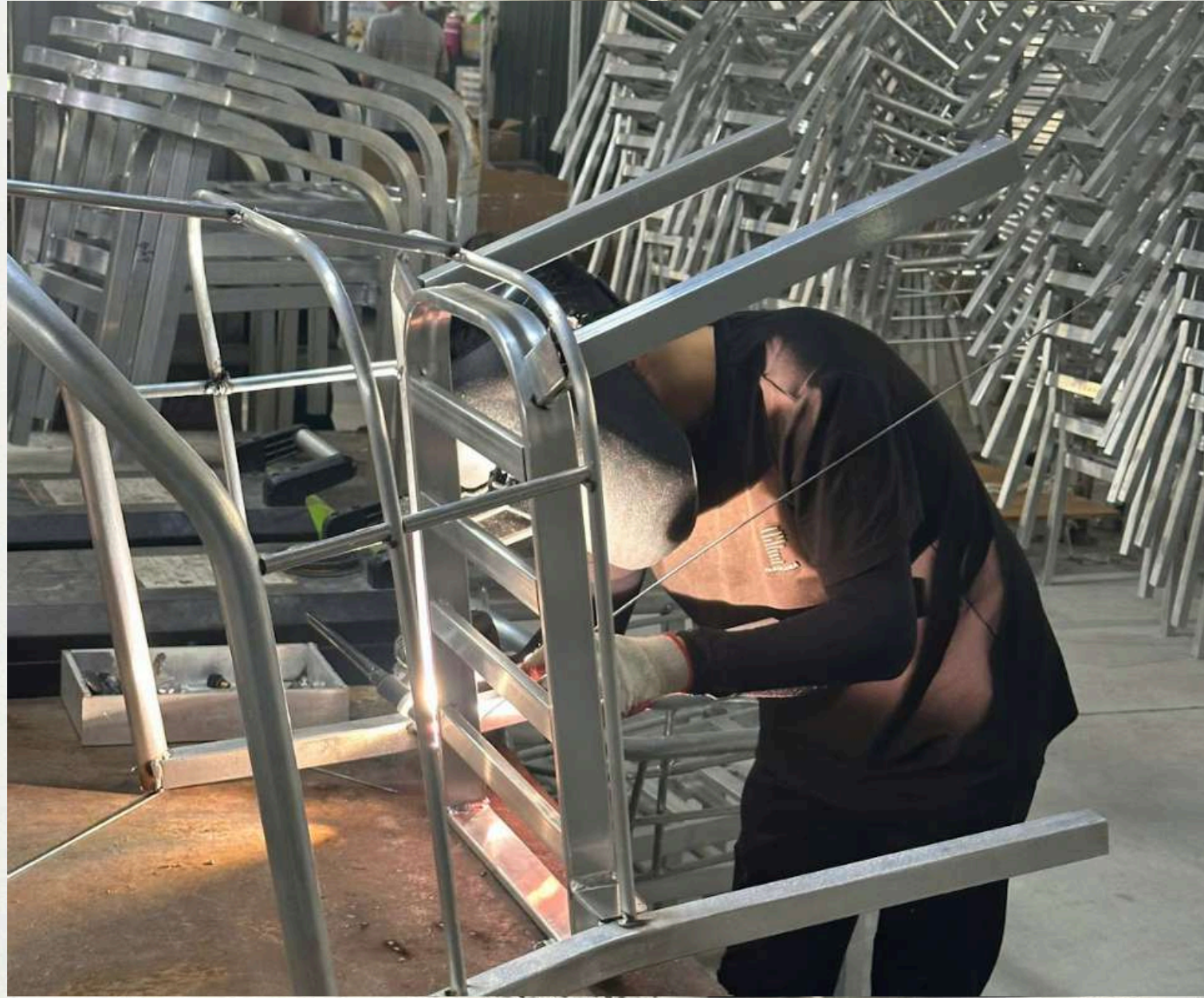
NGOC PHUC CUSHION FACTORY: 7.000M2



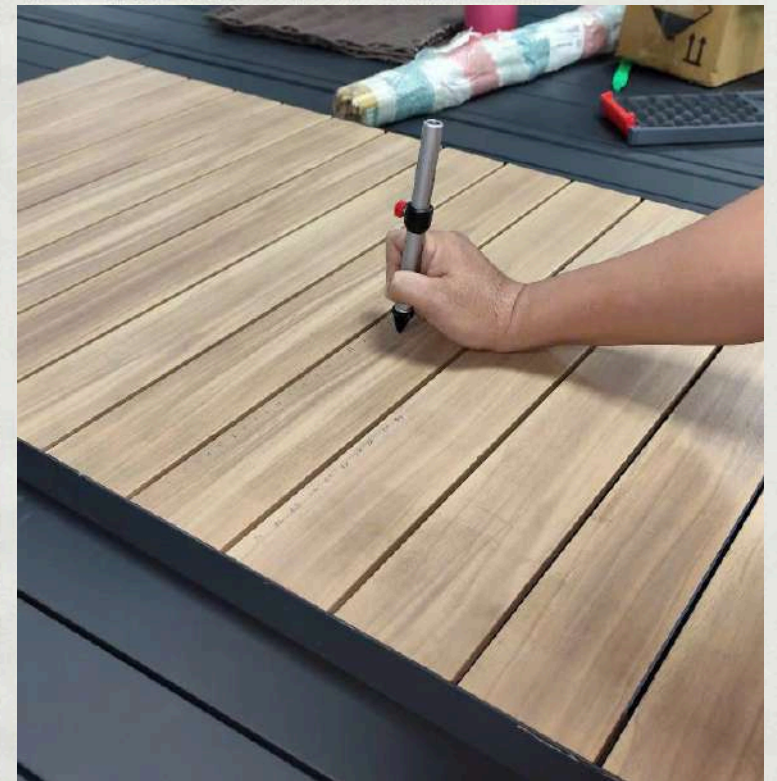


NGOC PHUC CUSHION FACTORY: 7.000M2





SGW | **OUR PEOPLE**
SAIGON WICKER



SWG | **OUR PEOPLE**
SAIGON WICKER



QUALITY INSPECTION PROCESS

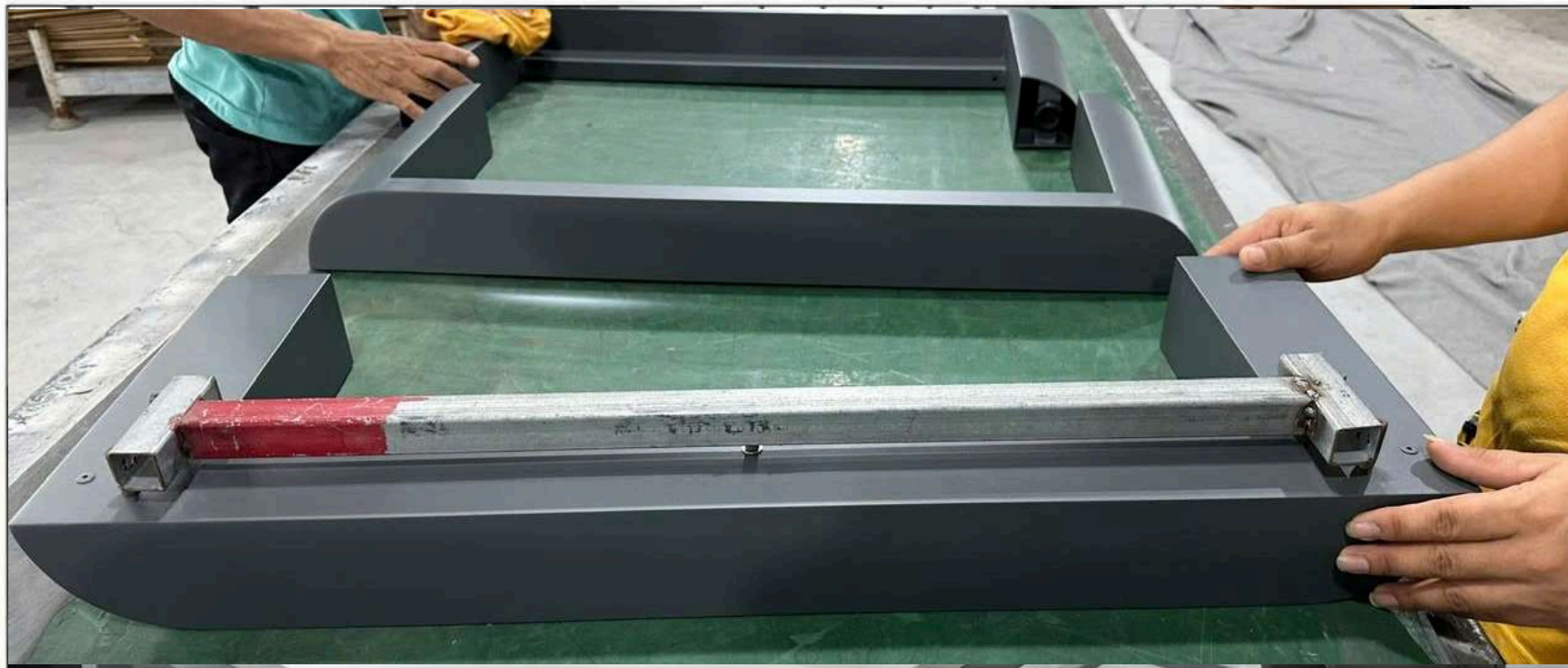
RIGOROUS 4-STAGE INSPECTION PROCESS GUARANTEEING EXCELLENCE FROM RAW MATERIAL TO FINAL SHIPMENT



1. PRECISION FRAME INSPECTION



2. ARTISAN WICKER WEAVING INSPECTION



3. UPHOLSTERY & DIMENSION INSPECTION



4. FINAL PRE-SHIPMENT APPROVAL



OUR COLLECTIONS



SGW
SAIGON WICKER





CUSTOMIZE OUTDOOR





OUR COLLECTIONS





OUR COLLECTIONS





OUR COLLECTIONS





OUR COLLECTIONS



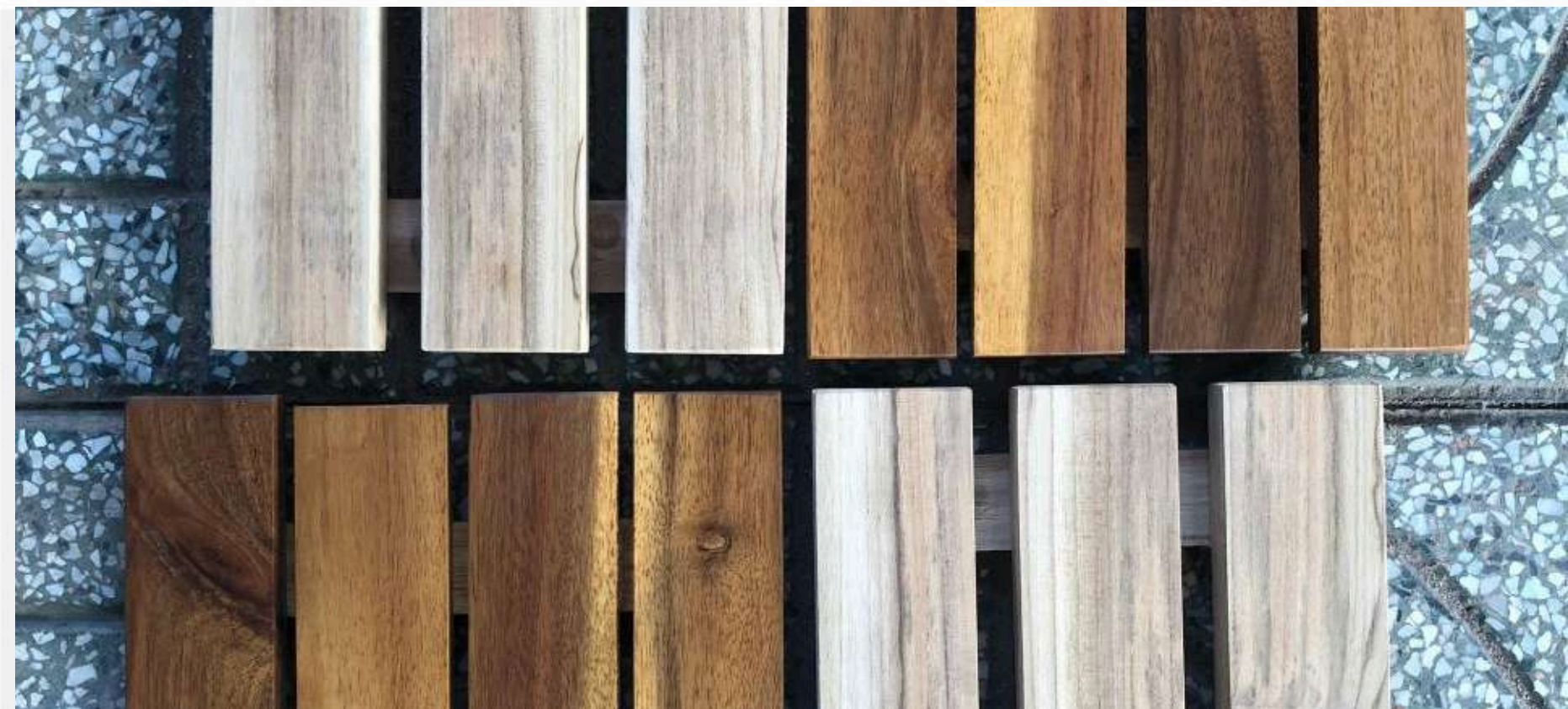


OUR COLLECTIONS





OUR COLLECTIONS





OUR COLLECTIONS





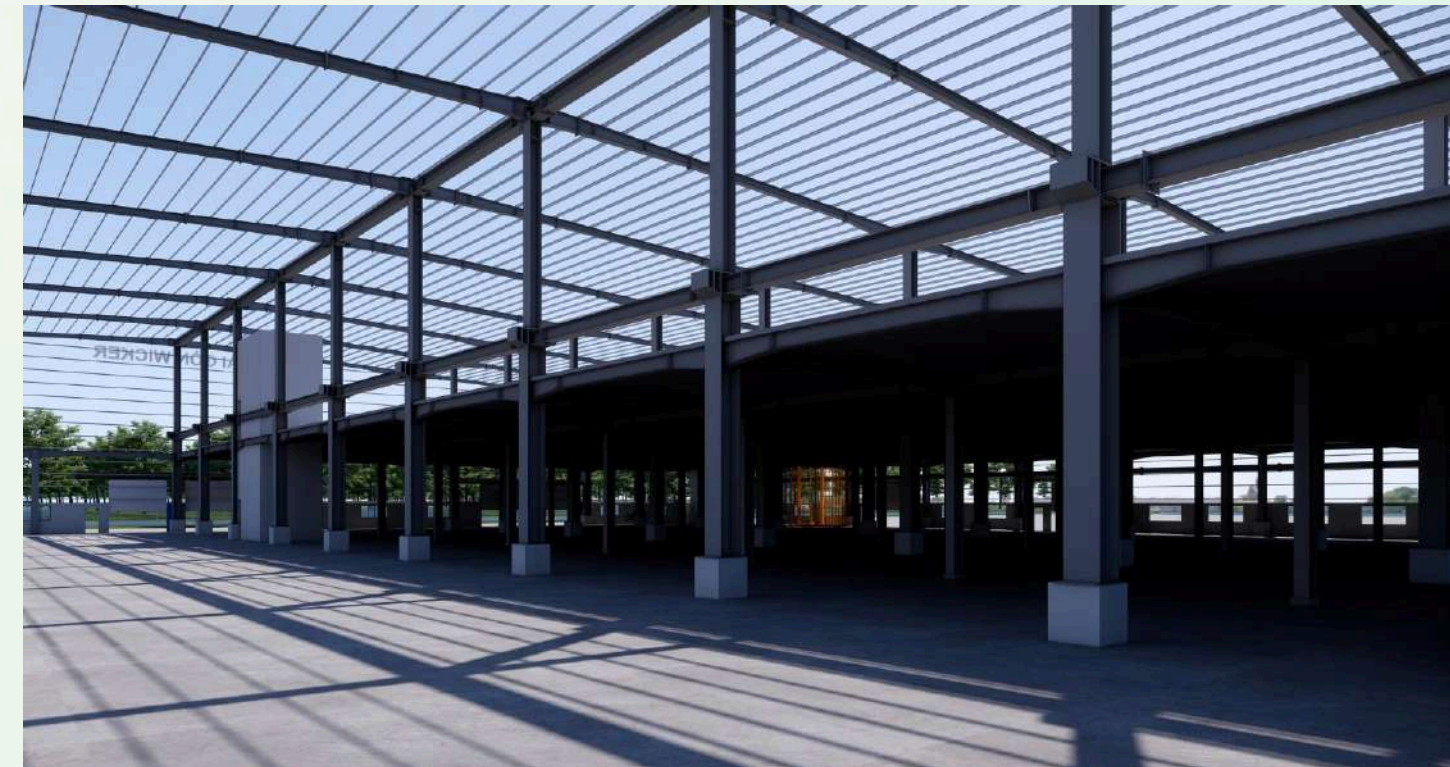
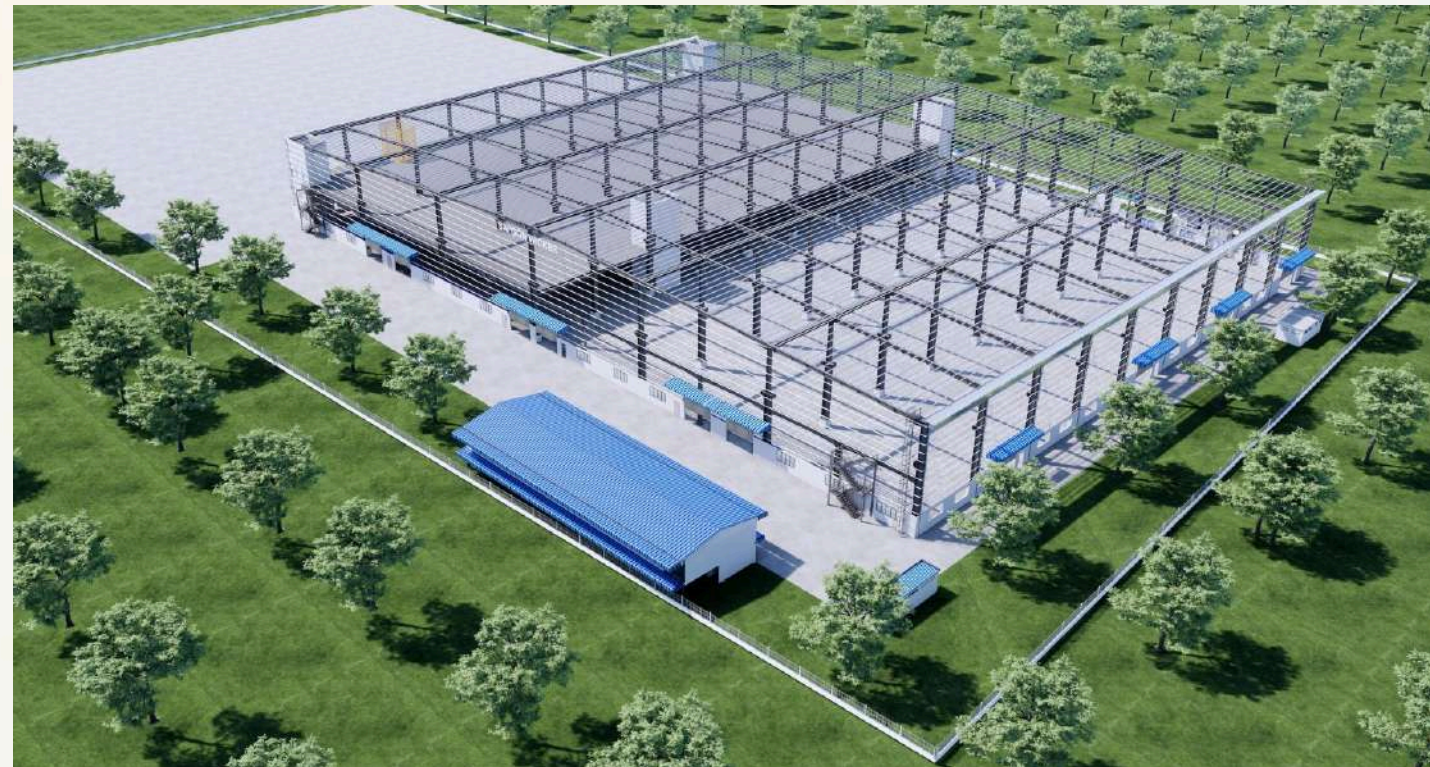
OUR COLLECTIONS





New Factory

New Factory



Thank You For Your Interest!

We Look Forward To Our Cooperation

Factory: Long An Province, Vietnam | Office: HCM City, Vietnam



• Mr. Phuong (CEO) | phuong@saigonwicker.com

• Ms. Kim (Sales Manager) | kim@saigonwicker.com

• Ms. Anna (Sales Leader) | anna@saigonwicker.com

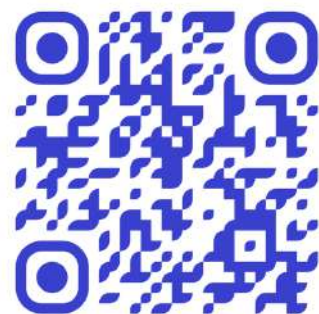
• Ms. Jenny (Sales Leader) | sales@saigonwicker.com

• Ms. Helia (Senior Sales) | helia@saigonwicker.com

• Mr. Leo (Senior Sales) | leo@saigonwicker.com

• Ms. Sophie (Senior Sales) | sales2@saigonwicker.com

• Mr. Tam (Brand Developer) | mono@saigonwicker.com



WEBSITE



LINKEDIN



FACEBOOK